



About Me

Dakota Tackett



PHYSICAL MAP OF THE UNITED STATES



PHYSICAL MAP OF THE UNITED STATES
 1:50,000,000 (1:150,000,000)



THE YUKON HARBOR
 About the middle of the 19th century, the Yukon-Canadian border was established. The Yukon River is one of the great rivers of the world. It flows for 3,000 miles to the Gulf of Alaska. During 17 million years ago, one of the great ice ages, the Yukon River valley was a broad, flat plain. The great ice sheet that once covered the continent has since been eroded by the Gulf of Alaska.

GREAT BASIN
 Between the Rockies and the Sierra Nevada, the central North American highland tableland and ranges, which occupy much of the western United States, is the Great Basin. It is a high plateau, and its surface is a series of basins. The Great Basin is a high plateau, and its surface is a series of basins. The Great Basin is a high plateau, and its surface is a series of basins.

ROCKY MOUNTAINS
 Part of the great northern mountain range and South America, the Rocky Mountains, which rise from the north to the south, are a series of high mountains. The Rocky Mountains are a series of high mountains, and they rise from the north to the south.

GREAT PLAINS
 A great level plain, which rises from the north to the south, is the Great Plains. It is a high plateau, and its surface is a series of basins. The Great Plains is a high plateau, and its surface is a series of basins.

SEAS OF GLACIERS
 Advancing and retreating over a year of hundreds of millions of years, the glaciers of the Pleistocene epoch, which covered the entire North America, have left behind them a series of high mountains. The glaciers of the Pleistocene epoch, which covered the entire North America, have left behind them a series of high mountains.

CALIFORNIA CENTRAL VALLEY
 An arid valley, which is one of the great valleys of the world, is the California Central Valley. It is a high plateau, and its surface is a series of basins. The California Central Valley is a high plateau, and its surface is a series of basins.

THE GREAT BASIN
 Between the Rockies and the Sierra Nevada, the central North American highland tableland and ranges, which occupy much of the western United States, is the Great Basin. It is a high plateau, and its surface is a series of basins.

THE GREAT PLAINS
 A great level plain, which rises from the north to the south, is the Great Plains. It is a high plateau, and its surface is a series of basins. The Great Plains is a high plateau, and its surface is a series of basins.

THE GREAT BASIN
 Between the Rockies and the Sierra Nevada, the central North American highland tableland and ranges, which occupy much of the western United States, is the Great Basin. It is a high plateau, and its surface is a series of basins.

THE GREAT PLAINS
 A great level plain, which rises from the north to the south, is the Great Plains. It is a high plateau, and its surface is a series of basins. The Great Plains is a high plateau, and its surface is a series of basins.

THE GREAT BASIN
 Between the Rockies and the Sierra Nevada, the central North American highland tableland and ranges, which occupy much of the western United States, is the Great Basin. It is a high plateau, and its surface is a series of basins.

THE GREAT PLAINS
 A great level plain, which rises from the north to the south, is the Great Plains. It is a high plateau, and its surface is a series of basins. The Great Plains is a high plateau, and its surface is a series of basins.

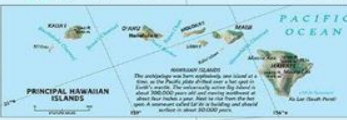
THE GREAT BASIN
 Between the Rockies and the Sierra Nevada, the central North American highland tableland and ranges, which occupy much of the western United States, is the Great Basin. It is a high plateau, and its surface is a series of basins.

APPALACHIAN RANGE
 Among Earth's oldest ranges, the 1,600-mile-long range, which rises from the north to the south, is the Appalachian Range. It is a high plateau, and its surface is a series of basins. The Appalachian Range is a high plateau, and its surface is a series of basins.

COASTAL PLAINS AND MOUNTAINS
 Between 1,000 and 2,000 years ago, the Gulf of Mexico and the Atlantic Ocean were covered by a great sea. The sea was so deep that it covered the entire North America. The sea was so deep that it covered the entire North America.

COAST-TO-COAST MOSAIC

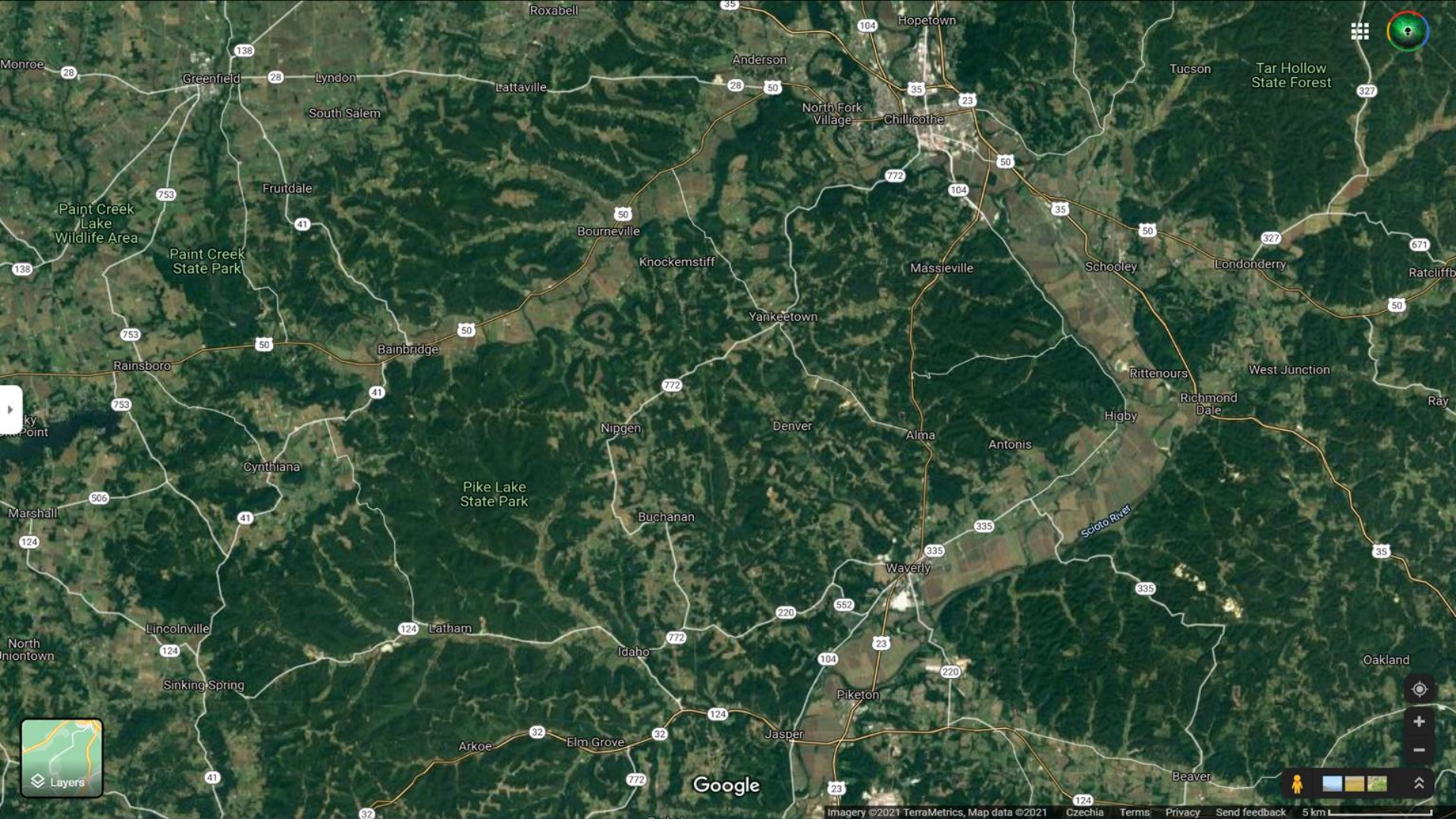
	High ground		Mixed forest
	Upland		Shrubland
	Evergreen		Woods
	Desertland		Wetland



OHIO
Cities



0 25 50 Miles
0 25 50 Kilometers



Google



772

Valley Rd

Valley Thrift Store

Backwoodz Oddities presents The Last...

163

Pleasant Valley Christian Union Church

153

Landman Rd

153

Valley Rd

163



Google







UNITED STATES

North Atlantic
Ocean

Belize

North Pacific
Ocean

VENEZUELA



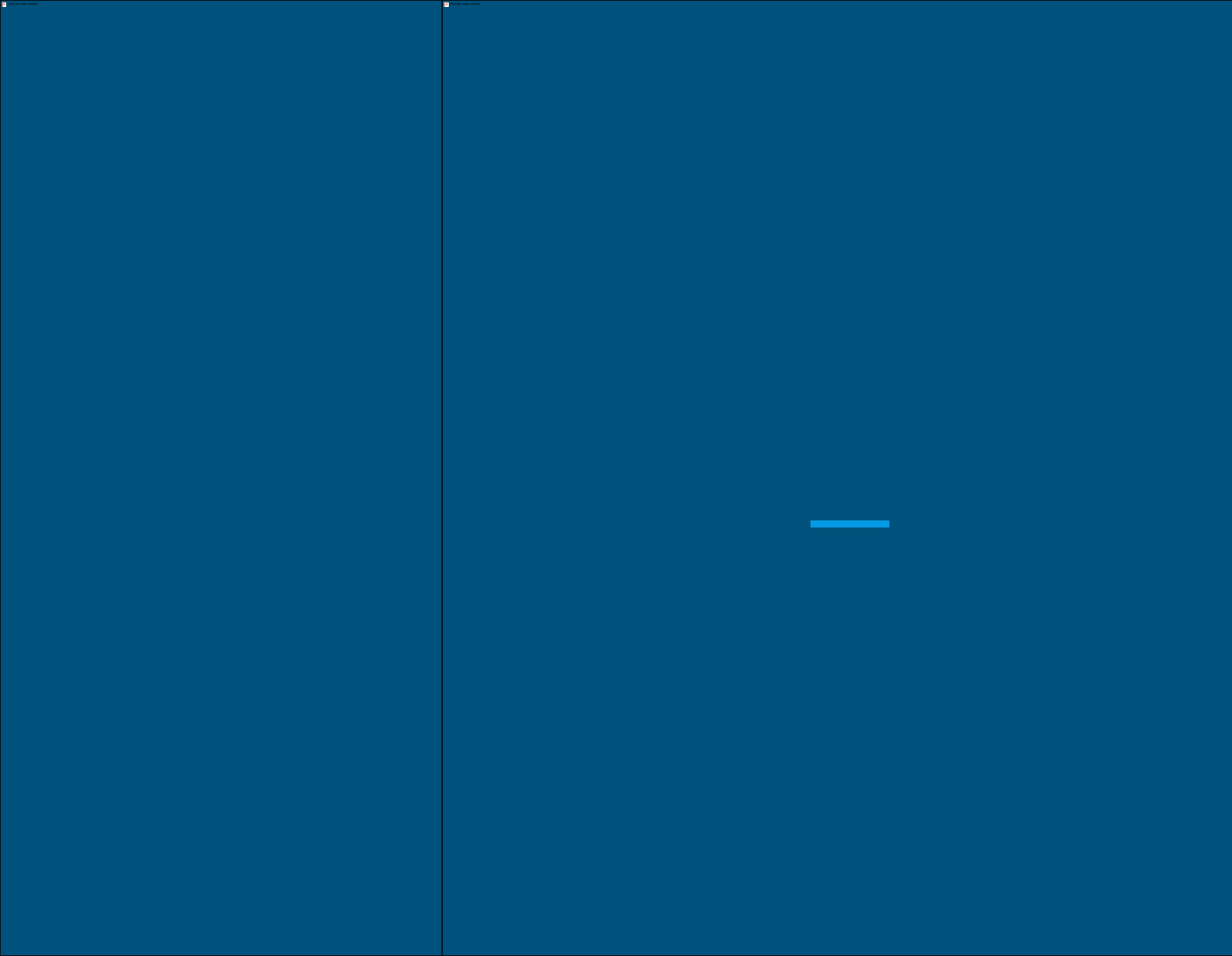


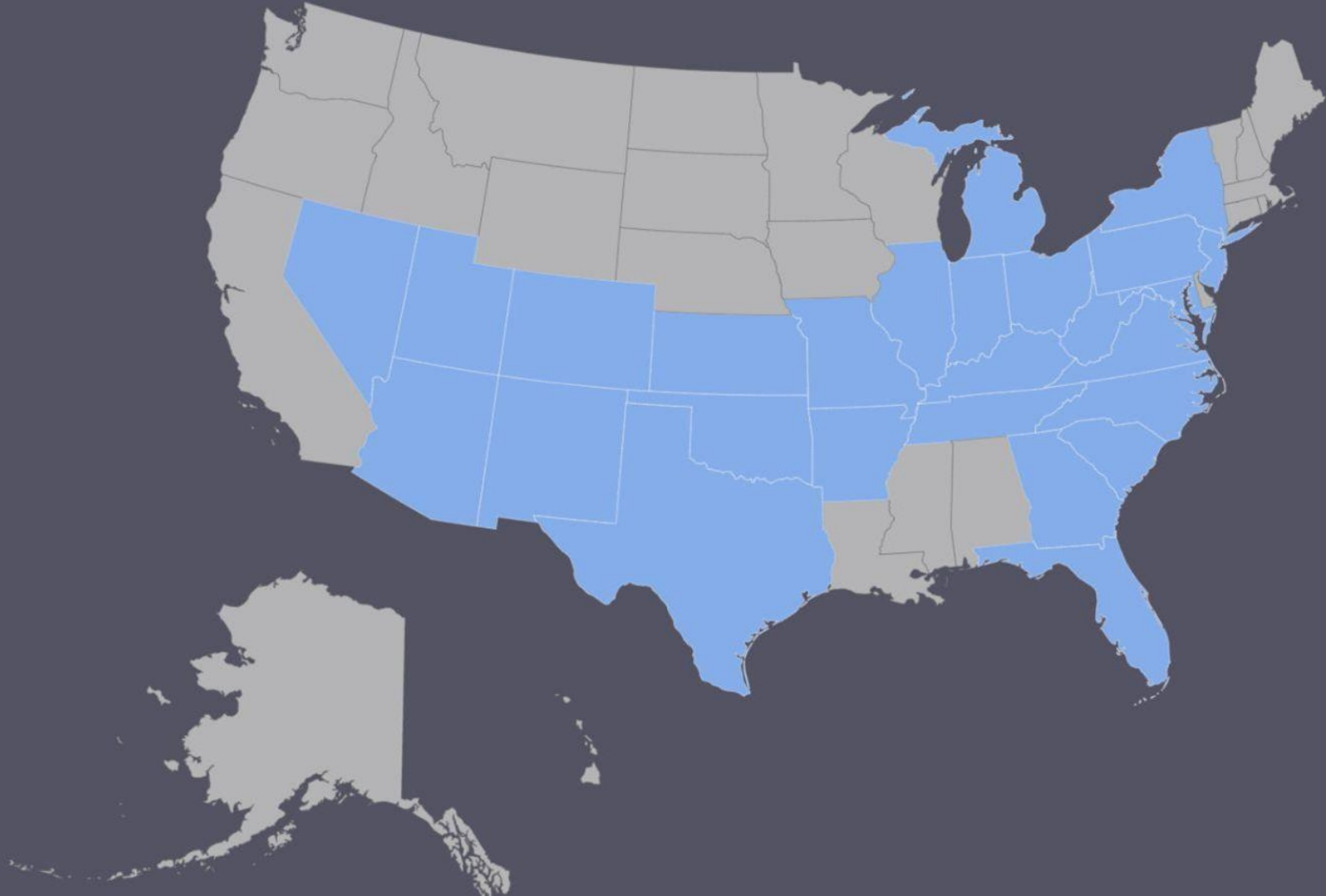


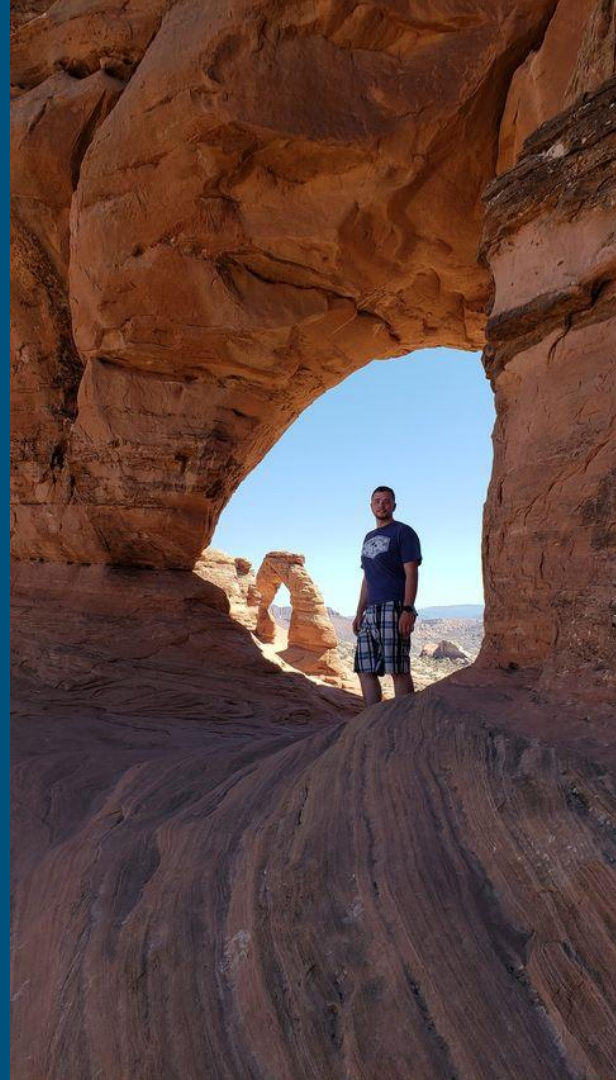
Germany







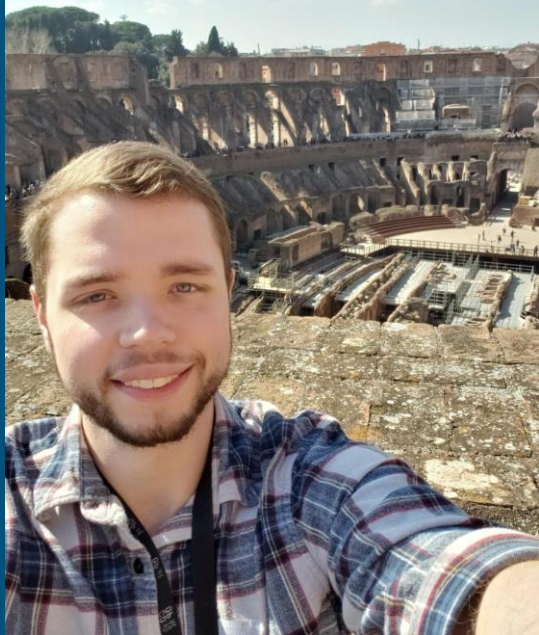














<https://www.youtube.com/watch?v=GqA7kwxclhw>

