

Výukový materiál zpracovaný v rámci operačního programu Vzdělávání pro konkurenceschopnost



INVESTICE DO ROZVOJE VZDĚLÁVÁNÍ

Registrační číslo: CZ.1.07/1. 5.00/34.0084

Šablona: II/2 Inovace a zkvalitnění výuky cizích jazyků na středních školách

Sada: 2 AJ

Číslo: VY_22_INOVACE_PRO_4ROC_27

Technical English



Předmět:	Anglický jazyk
Ročník:	4.ročník
Klíčová slova:	author, work, period
Jméno autora:	Mgr. Jolana Čechová
Adresa školy:	Střední škola zemědělská, Osmek 47 750 11 Přerov

British Literature I

(500 – 1620)

British literature

(500 – 1620)

Old English literature (Anglo-Saxon period) (500-1100)

Character: no rhyme, generally religious and based on biblical stories, old English

Main hero: a warrior

Main genres: poetry, prose, riddles, poems (epic)

Main works: *Beowulf* (epic poem), *The Anglo-Saxon Chronicle* (Alfred the Great)



British literature

(500 – 1620)



➤ **Beowulf** (8th century the author is unknown)

- Epic poem that tells the story of the young hero Beowulf, who killed the monster called Grendel that was raiding the camp of the Danish King Hrothar. Beowulf later becomes King of the Geats and defeats a dragon in mortal combat.
- It is the heroic story of one man's struggle against the evil.





British literature

(500 – 1620)



Middle English literature

(1100-1500)

Character: rhyme, verse, concentration on God, later on ordinary people

Main hero: knights, outlaws, kings

Main genres: fables, chronicles, romance, legends poetry, poems, plays (mystery x morality), prose, ballads

Main works: *King Arthur, Robin Hood, Canterbury Tales* (Geoffrey Chaucer)



British literature

(500 – 1620)



Geoffrey Chaucer (1340-1400)

- The father of English language and poetry.
- Wrote in London dialect and made this dialect national language.
- Described ordinary people.(a monk, a cook, a sailor)

➤ Canterbury Tales

24 tales told by pilgrims on the way from London to Canterbury Cathedral to visit the shrine of St. Thomas Becket. (Wife of Bath,

British literature

(500 – 1620)

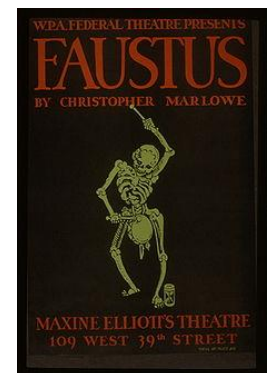
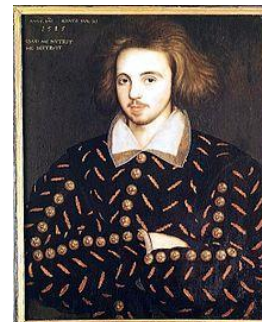
The Elizabethan Age (1500-1620)



Character: humanism, renaissance,

Main genres: prose, poetry (lyrics, sonnets), drama
(historical plays, comedies)

Main works and authors: *The Faerie Queen* (Edmund Spenser), *Utopia* (Thomas More), Shakespeare, *Dr. Faustus* (Marlowe).





British literature

(500 – 1620)



The Elizabethan Drama

- The beginning of the professional theatre.
- Professional companies included only men.
- Female parts were played by adolescent boys in woman's costumes.

Professional playwrights: Christopher Marlowe,
William Shakespeare

Professional theatres and companies: Black Friars Theatre, Curtain Theatre, King's Men

British literature

(500 – 1620)



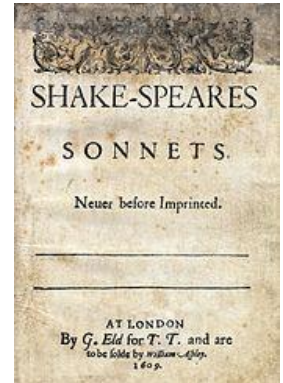
Shakespeare

William Shakespeare (1564-1616)

- Poet (poems, sonnets), playwright (32, drama, comedy)
- Born in Stratford upon Avon, married Anne Hathaway, had three children, moved to London and with several famous actors opened *The Globe*.
- His work is characterized by ancient material being put into new forms and the study of people in various social and personal conflicts.
- Style: free-verse, blank verse, romantic imagines of love, pride and honour, metaphors, allusions, folk jokes.

British literature

(500 – 1620)

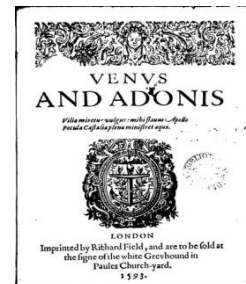


➤ The Sonnets

- 154, iambic pentameter, 14 lines (abab cdcd efef gg).
- Printed in 1609.
- Refer to a young man of a good family and may be addressed to William Herbert (The Earl of Pembroke) or to The Earl of Southampton.
- People mentioned in The Sonnets: a girl, a rival poet

➤ Venus and Adonis

- Epic poem



British literature

(500 – 1620)

➤ Historical plays

- Henry IV.
- Richard II.
- Julius Caesar
- Anthony and Cleopatra

➤ Comedies

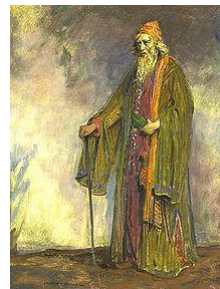
- A Midsummer Night's Dream
- The Merchant of Venice

➤ Romances

- The Winter's Tale

➤ Tragedies

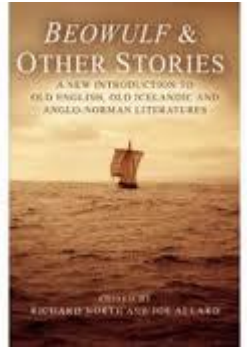
- Romeo and Juliet
- Hamlet
- Othello
- King Lear





British literature

(500 – 1620)



Practice 1 (*answer the questions*)

- 1) Who was the main hero in OE period?
- 2) Who wrote the epic poem Beowulf?
- 3) What is the difference between OE and ME character?
- 4) Who was Geoffrey Chaucer and what is he famous for?
- 5) Who were people travelling to Canterbury and why did they travel there?
- 6) Do you know any works from ME period?



British literature

(500 – 1620)

Practice 2 *(multiple choice)*

- 1) Elizabethan Age is characterized by?
a) Renaissance b) Concentration on God?
- 2) Only women were allowed to play in Elizabethan drama.
a) Yes b) No
- 3) Christopher Marlowe is the author of
a) Utopia b) Dr. Faustus
- 4) Shakespeare's plays were performed in
a) Globe b) National theatre



British literature

(500 – 1620)



Practice 3 (match the numbers to the letters)

- | | |
|---------------------------|--|
| 1) Romeo and Juliet | a) Historical play |
| 2) Anthony and Cleopatra | b) Poem |
| 3) The Merchant of Venice | c) To be or not to be that is the question |
| 4) Richard III | d) Iambic pentameter |
| 5) The Sonnets | e) House of Capulet and House of Montague |
| 6) Venus and Adonis | f) Comedy |
| 7) Hamlet | g) Romance |
| 8) The Winter's Tale | h) My kingdom for horse! |

Check your answers

Practice 1

Slides 1-7

Practice 2

Slides 8-10

Practice 3

1e

2a

3f

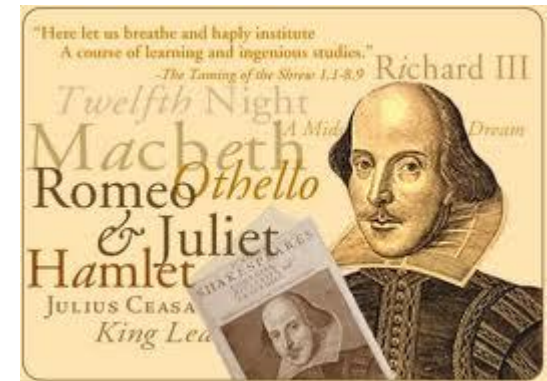
4h

5d

6b

7c

8g



Použité zdroje



- Veškeré použité obrázky (kliparty) pocházejí ze sady Microsoft Office 2010.
- Všechny fotografie pochází z archivu autora
- Peck A., E., *Anglická literatura*, INFOA, Dubicko:2002

*Autorem materiálu a všech jeho částí, není-li uvedeno jinak, je Mgr. Jolana Čechová
Financováno z ESF a státního rozpočtu ČR.*