

Výukový materiál zpracovaný v rámci operačního programu Vzdělávání pro konkurenceschopnost



INVESTICE DO ROZVOJE VZDĚLÁVÁNÍ

Registrační číslo: CZ.1.07/1. 5.00/34.0084

Šablona: II/2 Inovace a zkvalitnění výuky cizích jazyků na středních školách

Sada: 2 AJ

Číslo: VY_22_INOVACE_PRO_1.,2.,3.,4.,ROC_11

Technical English



Předmět:	Anglický jazyk
Ročník:	2.OZ
Klíčová slova:	farm, plant, livestock
Jméno autora:	Mgr. Jolana Čechová
Adresa školy:	Střední škola zemědělská, Osmek 47 750 11 Přerov

Technical English

Farming



A Farm

- an area of land used for the production of crops and animals
- a farm may be owned or rented
- private individual farms are operated by the members of a family
- corporate farms are operated by companies

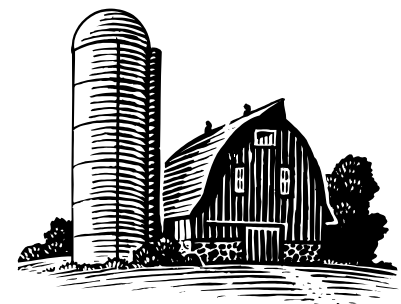


Technical English

Farming

Farm Buildings

- Stable is for horses
- Cowshed is for cows
- Pigsty is for pigs
- Henhouse is for hens
- Barn is used to storage crops or to park machines
- Hayloft is for hay storage
- Bunker silo and Tower silo are for ensiling
- Workshop the machines are repaired there



Technical English

Farming

Farmland

- Field
- Plantation
- Orchard
- Garden
- Vineyard
- Meadow
- Pasture





Technical English

Farming



Plants and Farm (economic) Crops

- Grains and cereals = wheat, barley, maize, oats,
- Oil crops = oilseed rape, sunflower
- Pulses = beans, pea,
- Roots and tubers = potatoes, sugar beet
- Fodder crops = clover
- Technical and fibre crops = cotton, hemp
- Vegetables and fruits = carrot, onion, apple

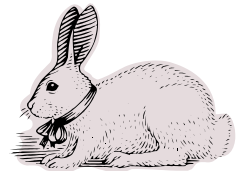
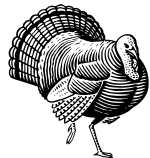
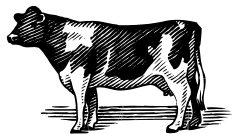


Technical English

Farming

Livestock (animals)

- Cattle = cow, bull, ox , calf → meat, milk,
- Pigs = pig, sow, piglet, swine → meat
- Poultry = hen, turkey, duck → meat, eggs, feather
- Sheep = lamb, ewe, ram → meat, wool
- Goats = kid, billy goat, → meat, milk
- Horses = gelding, donkey → work, sport
- Rabbits → meat





Technical English

Farming



Practice 1

(match the words 1-6 with the definition A-F)

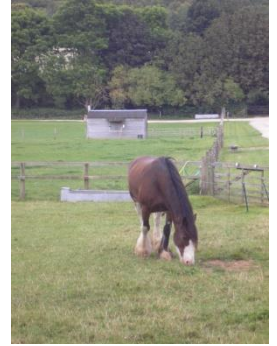
- 1___ a farm
- 2___ cereal
- 3___ poultry
- 4___ an orchard
- 5___ a pasture
- 6___ a stable
- 7___ cattle
- 8___ a meadow

- A. a plant that makes grain.
- B. Ducks, hens, chicken.
- C. an area of land used for the production of crops and animals.
- D. You can see horses there.
- E. An open area where cows, horses or sheep move.
- F. Cows, bulls, calves..
- G. An area covered with grass.
- H. You can grow apples or peaches there.



Technical English

Farming



Practice 2 (fill in the correct word)

- 1) Humans have always used animals for ---- and ---- .
- 2) ----- from animals is often used to cover the furniture.
- 3) Many clothes are made of ---- .
- 4) A ----- is a building used to house animals.
- 5) --- ---- is a farm that raises female pigs.
- 6) A female chicken is called --- .
- 7) Our ---- produce one to two lambs per year.
- 8) Each trainer has a minimum of five years experience in training ----- .





Technical English

Farming



Practice 3 (discuss these questions with your partner)

- 1) What are your favourite fruits and vegetables?
- 2) What type of meat come from animals?
- 3) What other products come from animals?
- 4) How are animals housed in your country?
- 5) What products come from the poultry industry?
- 6) What dairy products are popular in your country?
- 7) How are horses used in your country today?



Check your answers

Practice 1

2A, 1C, 3B, 4H, 5E, 6D ,7F, 8G.

Practice 2

Milk meat, leather, wool, stable, sow farm, hen, ewes, horses.

Practice 3

Students' own answers



Použité zdroje



- Veškeré použité obrázky (kliparty) pocházejí ze sady Microsoft Office 2010.
- Všechny fotografie pochází z archivu autora
- <http://library.thinkquest.org/TQ0312380/machine.htm> 4.9.2013
- Voráček J., *Zemědělská angličtina*, Profi Press s.r.o., Praha:2004

*Autorem materiálu a všech jeho částí, není-li uvedeno jinak, je Mgr. Jolana Čechová
Financováno z ESF a státního rozpočtu ČR.*